

# time | emit

exhibition at  
**[DAM]Berlin gallery**  
February 21st - March 28th, 2009

presented projects by LAb[au]:

chrono.prints

swarmdot

## Time | emit LAb[au]

[DAM] Berlin gallery

Exhibition: February 21st - March 28th, 2009

Preview: Friday, February 20th, 2009 7-9 pm

presented projects:

12 x chrono.prints + 8concoles, 2009

swarmdot, 2009



LAB[au]. Laboratory for architecture and urbanism

M.Abendroth, J.Decock, A.Plennevaux, E.Vermang

The artist group LAB[au] from Brussels is known for its large-scale light-installations and kinetic objects in urban spaces (f. e. Dexia-Tower, Brussels) . The exhibition deals with the subject of time. On the basis of cybernetics and the theory of colours they transform time in light and colours. The local time of different time zones on earth will be shown as a perpetually changing colour installation on twelve consoles according to the principle of GMT. The code of the installation - the concept of the work - is visualised as a text on the walls of the gallery.

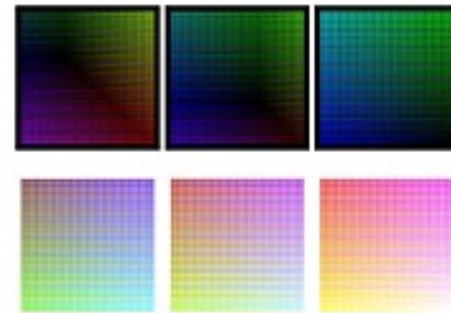
In addition the chrono.prints will be shown which represent each a period of two hours of a day. One half of the day is based on a white background to symbolise the reduction of all colours (decreasing light from noon to midnight), the other half on a black background as a result of the addition of all colours (increasing light during the morning hours). The chrono.prints take part of the chrono cycle which has been started with a light artwork exhibited from sunset to sunrise on Brussels' Dexia Tower in 2007.

Apart from the installation 'time | emit LAB[au]' also presents their new sculpture SwarmDot dealing with the subject of swarms. As the antecessor Pixflow it is not only an aesthetically coherent software piece but also includes the hardware intentionally as part of the sculpture. The column is made of a t-shaped Plexiglas box and thereby fully showing its components. SwarmDot consists of four vertically assembled screens, on which the software piece is shown.

CURRENT  
PAST  
FUTURE  
2008  
2007  
2006  
2005  
2004  
2003  
ART FAIRS

time | emit

LAB[au] Laboratory for Architecture and Urbanism  
(M.Abendroth, J.Decock, A.Plennevaux, E.Vermang)



Exhibition: February 21st - March 28th, 2009  
Preview: Friday, February 20th, 2009 7-9 pm

The artist group LAB[au] from Brussels is known for its large-scale light-installations and kinetic objects in urban spaces (f. e. Dexia-Tower, Brussels, see <http://www.youtube.com/watch?v=rEykA6Qd2L0>).

Their exhibition deals with the subject of time. On the basis of cybernetics and the theory of colours they transform time in light and colours. The local time of different time zones on earth will be shown as a perpetually changing colour installation on twelve consoles according to the principle of GMT. The code of the installation - the concept of the work - is visualised as a text on the walls of the gallery.

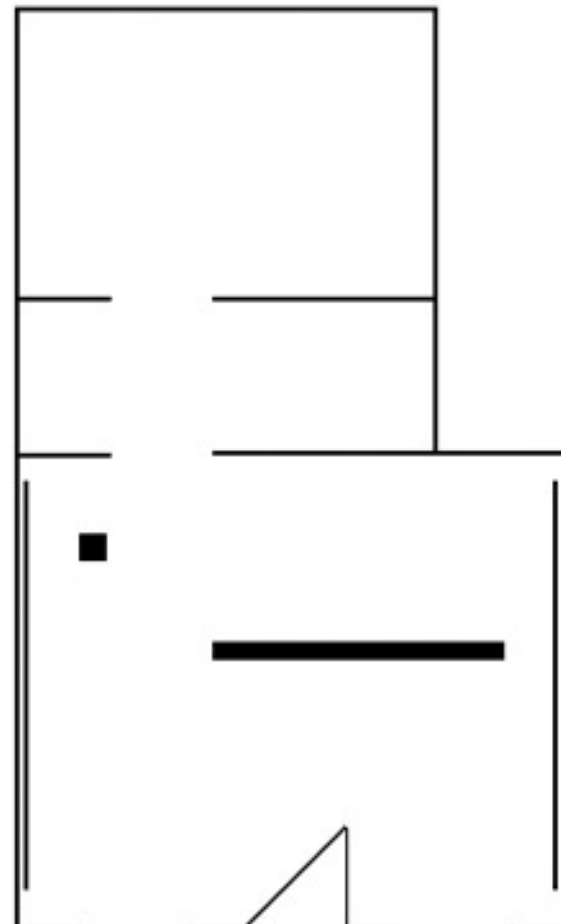
In addition to that prints will be shown which represent each a period of two hours of a day. One half of the day is based on a white background to symbolise the reduction of all colours (decreasing light from noon to midnight), the other half on a black background as a result of the addition of all colours (increasing light during the morning hours).



Apart from the installation time | emit LAB[au] also presents their new sculpture SwarmDot, that deals with the subject of swarms. As the antecessor Pixflow it is not only an aesthetically coherent software piece but also includes the hardware intentionally as part of the sculpture. The column is entirely made of plexiglass and thereby the components are fully visible. SwarmDot consists of four vertically assembled screens, on which the software piece is shown.

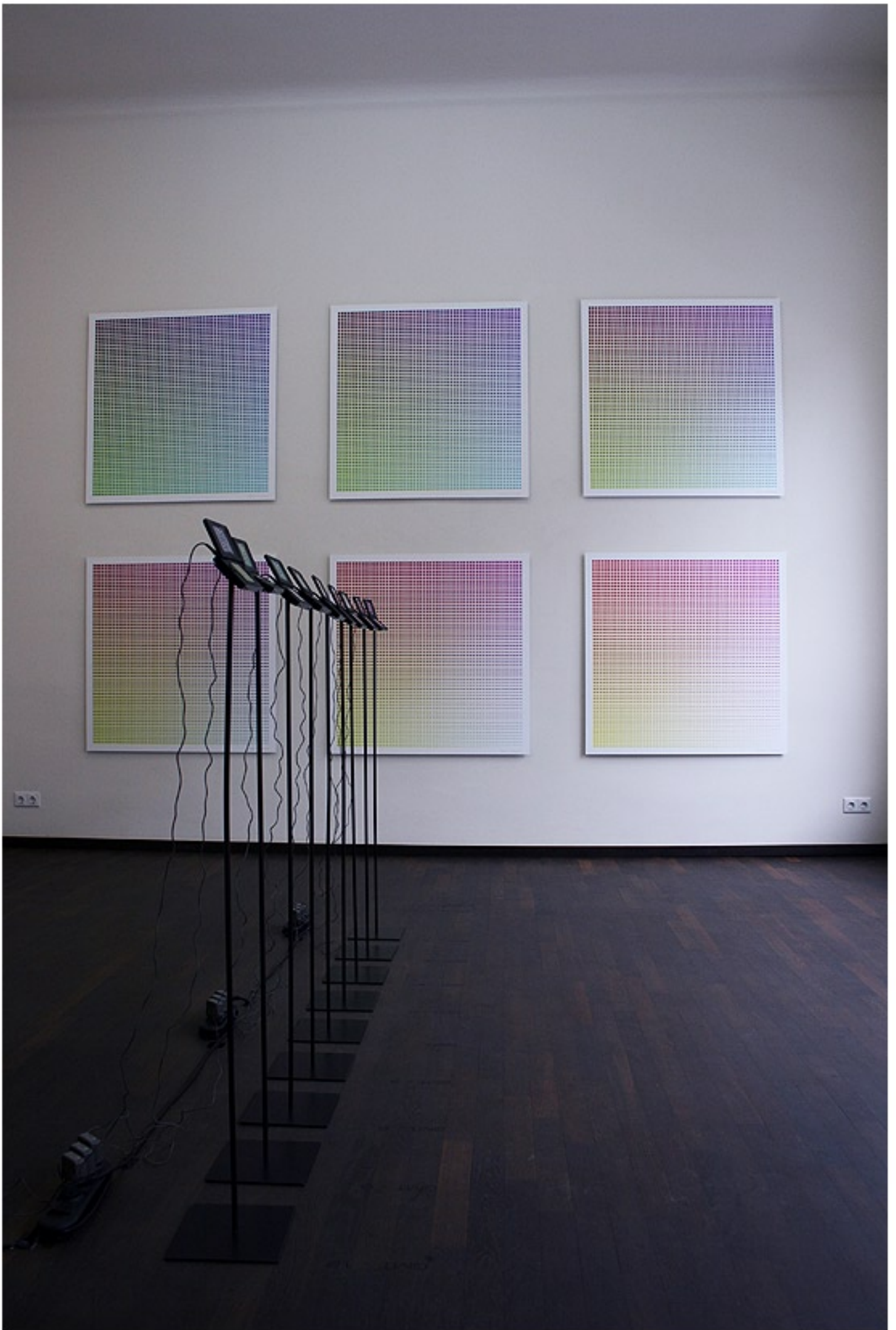
swarmdot  
art console

6x  
chrono.prints  
black



8x  
chrono  
consoles

6x  
chrono.prints  
white

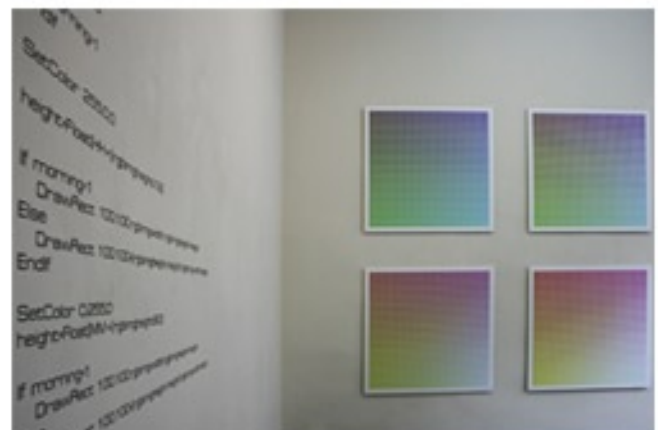
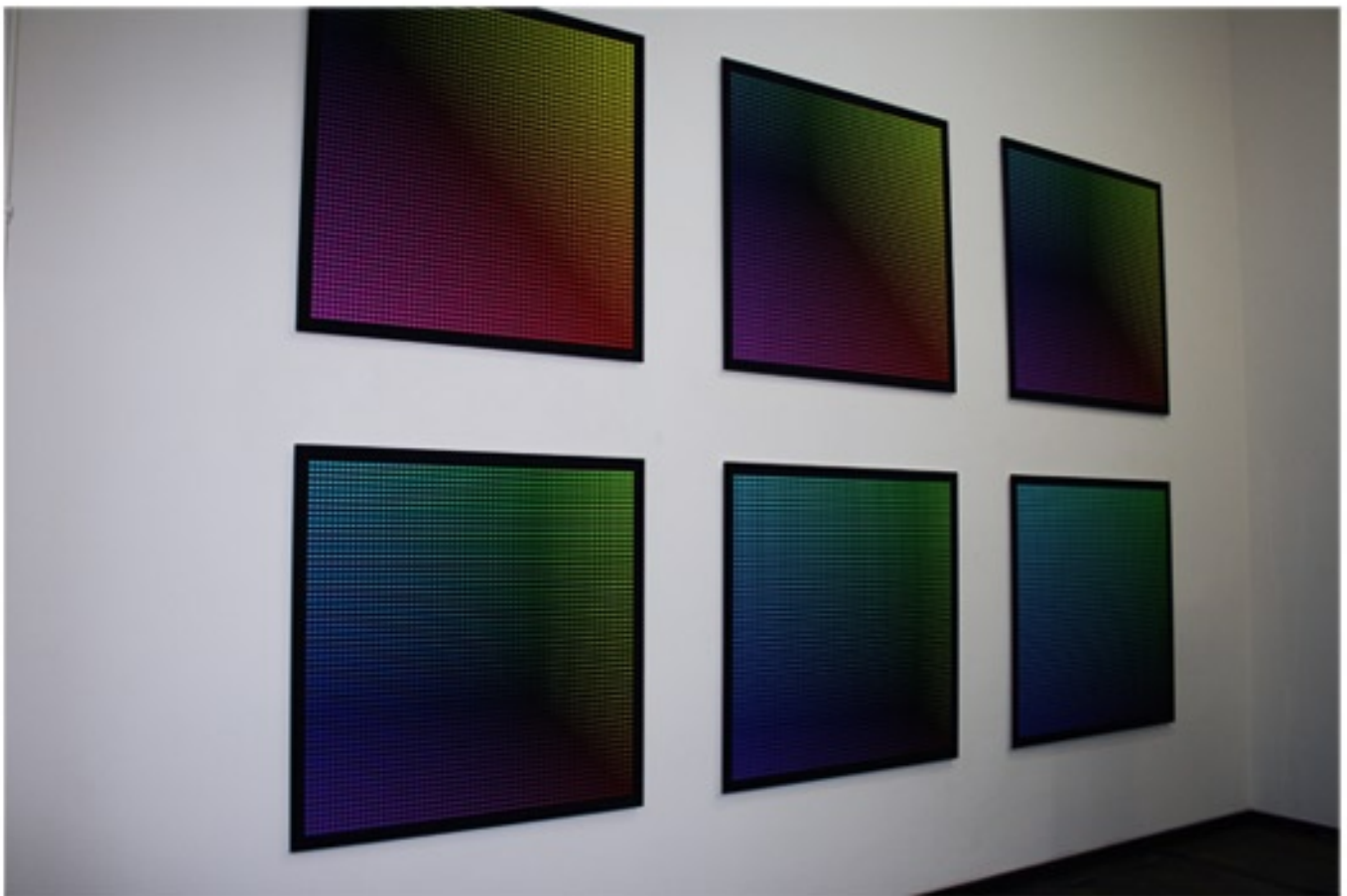


## chrono.prints

The chrono.prints, part of a work cycle under the title of 'chrono', are a series of 24 unique computer-generated prints (110\*110 cm, etch on aluminium), visualising the 24 hours, being the 86400 seconds, of the day.

Each print is mapping one hour, starting with its first second at the left upper corner, until the last; the 3600th one, at the right corner under. This squared matrix of 60 by 60 squares express one hour while each horizontal line visualises one minute.

'Chrono' applies the principle of mapping the basic units of time to the primary colours of light, where hours = red, minutes = green and seconds = blue. Following an additive colour model, the overlap of the colours creates yellow (red plus green), cyan (green plus blue), purple (blue plus red) and white (red plus green plus blue). In this manner the progression of time and mainly of the hours lead to an increasing brightness where midnight turns to be completely white. The reduction to an abstract and geometric language of primary colour relates the 'chrono works' to the hard edge movement of the 60's while confronting it to the systematic approach of programmed, parametric, art.

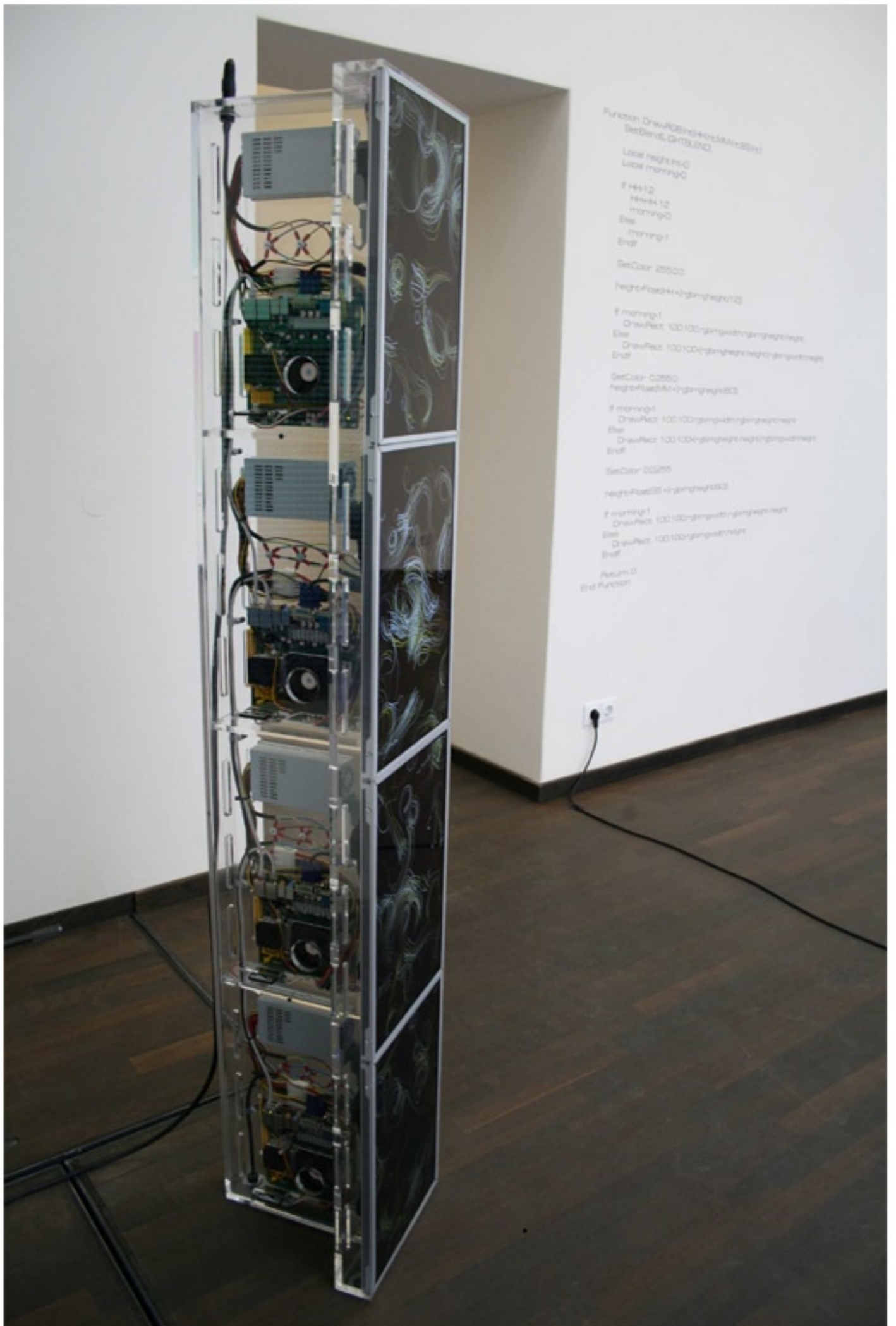


## SwarmDot

SwarmDot is a generative artwork based on swarm behaviour, a type of artificial intelligence, based on the collective behavior of decentralized, self-organized systems. Self-organization is a process of attraction and repulsion in which the internal organization of a system increases in complexity without being guided or managed by an outside source, but on simple rules each 'agent' follows. From their mutual influence of separation, alignment and cohesion emerges an unsuspected, highly evolving behaviour; dots shaping swarms of migrating lines and turbulences by following the combinatory play of numbers.

'SwarmDot' is running on an 'art console', a sculpture crafted by LAb[au], in form of a T-shaped Plexiglas box, integrating 4 stripped screens and 4 networked computers.





```
Function DrawRGBend+Hex+Miss25end  
SetDirC,DIRBLND  
  
Local height0  
Local morning0  
  
F Hex12  
Hex+12  
morning0  
Etc  
morning1  
EndF  
  
SetColor 25500  
  
height+height+height+height  
  
F morning1  
DrawRect 100100+height+height+height  
Etc  
DrawRect 100100+height+height+height  
EndF  
  
SetColor 02550  
height+height+height+height  
  
F morning1  
DrawRect 100100+height+height+height  
Etc  
DrawRect 100100+height+height+height  
EndF  
  
Return 0  
End Function
```